



Meemaw's Cherry Pie F
32 oz, 6 pack
CPF-MM-32
BEST BY DATE: 01/15
Green Valley, WI 53001

VIDEOJET

RUNNING 8:51 AM 8/21/2021

Home

JOB MM - CPF - 6pk - 4x6
Cherry Pie Filling (32oz, 6 pack)

Performance	Consumables
Throughput 0 p/m	Labels
Batch Count 0	Start Products
Total Count 175	

9560

Print & Apply Labelling

Videojet 9560

Precise, efficient performance for labelling cases, boxes and shrink wrap

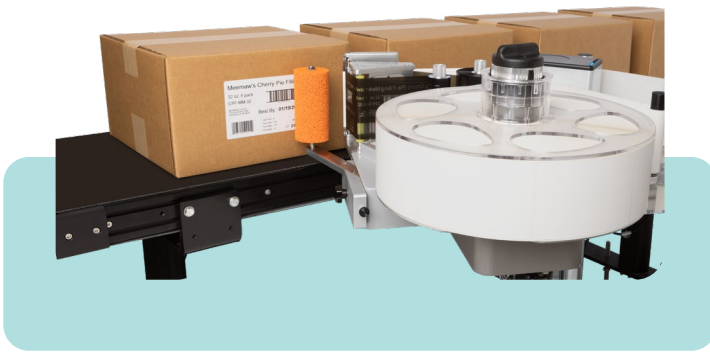


An expert labelling solution

Experience the evolution of the industry's proven Direct Apply labelling system.

Precision meets intelligence

Designed for the modern pace of high-speed labelling with industry-proven technology delivering consistent reliability and effortless operation. Without the need for plant air and complex setups, this advanced system offers a straightforward user interface and state-of-the-art Wi-Fi connectivity to streamline your end-of-line processes with unmatched simplicity and efficiency.



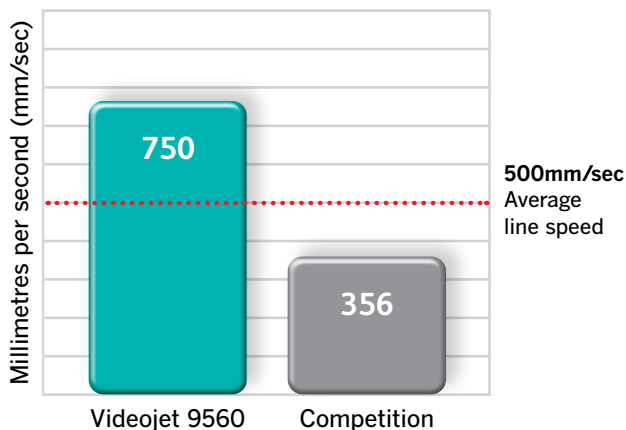
Why Direct Apply?

Simultaneously print and apply a label onto a passing pack at the speed of the conveyor, without the need for a tamp applicator.

- Eliminate label jams for common top or side labelling applications
- Up to 150 packs per minute (label size dependent) without the use of a tamp applicator
- Maintain throughput, even when the packs are accumulated
- No compressed air needed, eliminating both the installation cost and the ongoing running costs

Print & apply pack labelling speeds*

*@300dpi resolution, standard 6x4" label





What is unique about the 9560 design?

Simplify communication and integration with embedded Wi-Fi 

Precise and automatic control of the entire system thanks to **Intelligent Motion™**, with no slipping clutch, nip rollers or manual adjustments

Our user interface delivers a single point of set-up and control for the whole machine

Simple web path enables label and ribbon change in less than 60 seconds

Save time with collapsible mandrel for quick label changeovers

Reduce set-up time and errors while maximising availability from a proven print engine and label tension control system

Seamless connectivity with warehouse management systems and advanced emulation capabilities 

Industry-leading near edge printhead technology allows for high-speed print and apply labelling

A consistent labelling solution

Remove end-of-line inefficiencies and costs in your labelling operations.



Intelligent Motion™

Traditional print and apply labellers often fail to meet the performance demands of today's packaging operation. To achieve a breakthrough design, you first need to understand where things might go wrong.

Patented Intelligent Motion™ technology delivers automatic control of the system and eliminates the added parts and adjustments that can make other labelling machines fail.

The 9560 reduces the 5 most common reasons for downtime*

1. Label jams
2. Web jams
3. Ribbon breaks
4. Mechanical adjustments
5. Mechanical failures

*Compared to tamp applications

How does Intelligent Motion™ technology eliminate common pain points?

- ✓ A direct drive controls label speed and position without clutches, rollers or adjustments
- ✓ Electronic supply reel automatically adjusts and maintains tension irrespective of speed and label size from start to end of reel
- ✓ Printhead pressure is automatically regulated to help ensure optimum print quality and printhead life
- ✓ Precise ribbon control enables a clutch-less ribbon drive and ribbon save mode

An **adaptable** labelling solution

With ambitious production goals, seamless connectivity and compatibility.



Key benefits:

- Modular design allows for use of applicators if needed
- Simple and fast integration with OEM packaging systems
- Reduce operator set up errors and job selection with leader/follower functionality
- Switch to the 9560 without having to re-build previous job files and get up and running fast
- Dual printer synchronisation feature allows for zero downtime



Fewer wires, less mess

The Videojet 9560 includes embedded Wi-Fi* for secure remote access and analytical capabilities.

**Subject to availability in your country*

Fluent in your factory's communication language

Label design

Compatible with any label design software including CLARISOFT®, BarTender®, NiceLabel® TEKLYNX®, Loftware and others.

Emulation

Replicate the behaviour of other systems including Zebra® (ZPL), SATO™ (SBPL) and CoLOS™ (DCP and CIMCOMMS).

Control

Designed for seamless integration into production and control networks using EtherNet/IP™ and ProfiNet® protocols.

EtherNet/IP™



An easy-to-use labelling solution

Simple, efficient user interface, reducing risk of operator error.



Key benefits:

- Only one simple 8-inch user interface for easy control
- Onboard support videos guide the operator through routine maintenance tasks
- Reduce operator intervention with rapid job selection using bar code scanner
- Flexibility to position screens remotely
- Ability to access the interface on a connected network, including via mobile devices
- Eliminate data entry errors and reduce operator touches, helping to ensure products are coded correctly

Access the printer, anywhere.

Real-time remote visibility

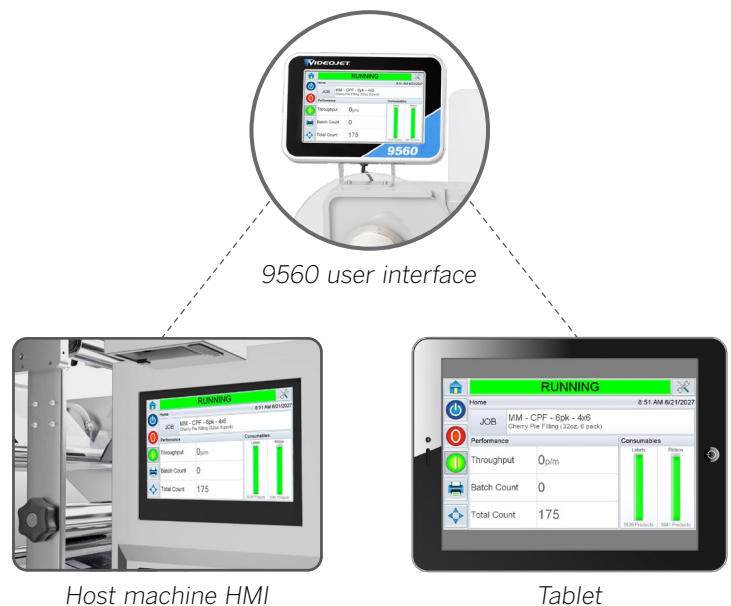
VideojetConnect™ Remote Service* provides real-time information on printer issues, allowing both Videojet experts and your technicians to monitor equipment status, troubleshoot issues and improve long-term performance.



**Subject to availability in your country*

Remote interface control

Establish preferred point of control with web server – in the office, on the line or anywhere in your plant network.





Videojet LifeCycle Advantage™

The Videojet 9560 leverages advanced analytics, remote connectivity and the largest service footprint in the industry to maintain our uptime commitment, improve operations over time and help you recover in minutes from unplanned interruptions.



Improve

- Leverage data across a fleet of connected printers to continually optimise printer performance
- Remote service data can be used to identify operational improvements and help you run your plant better



Maintain

- Get optional on-demand remote training at the touch of a button
- Service packages for periodic preventive maintenance help keep your printer in peak condition
- Configurable remote alerts notify customers of pending faults and possible issues to allow proactive resolution between production shifts



Recover

- Many repairs can be resolved with the assistance of the Videojet team of experts in minutes, and without waiting for on-site service
- Benefit from the largest global service organisation in the industry to support your on-site needs when necessary

Innovative technology optimised to help you meet your sustainability objectives

- No plant air needed. Aligns with many manufacturing facilities' sustainability initiatives reducing energy usage, and thus lowering carbon dioxide (CO₂) emissions.
- Innovative technology designed to reduce waste through smart ribbon and label controls.
- Remote service capabilities reduce the need for service visits.

The Videojet labelling portfolio delivers the agility to stay ahead of constantly evolving regulatory and sustainability requirements and the resulting supply chain needs for waste reduction, recycling and optimisation of transportation resources. With our comprehensive labelling solutions, you can reduce your environmental impact and optimise your supply chain while maintaining the highest levels of efficiency and reliability.



Videojet® 9560

Print & Apply Labeller

Application method

Direct Apply (standard) with Intelligent Motion™ Label Drive
Optional applicators: Front of Pack, Rear Corner Wrap, and Telescopic Tamp (see separate data sheet)

Print technology

Thermal Transfer printing with Intelligent Motion™ Ribbon Drive and Direct Thermal 53mm, 76mm, 107mm and 160mm printhead versions

Print resolution

300dpi / 200dpi emulation mode

Printhead health monitoring

Tool-free quick release printhead replacement

Print speed

<4.0" (10.2cm) label width up to 19.6in/sec (500mm/sec) in standard mode and up to 29.5in/sec (750mm/sec) in high-speed mode

>4.0" (10.2cm) label width up to 15.7in/sec (400mm/sec) in standard mode
Speeds are dependent on label size and application

Throughput

Typically 150 packs per minute based on label length and case size
Faster throughput may be possible dependent on specific application details

Ribbon specification

Width: 2.2" (55mm), 3.0" (76mm) and 4.3" (110mm) (standard) and 6.4" (162mm)
Capacity: Up to 830m, including automatic ribbon save (< 1mm ribbon gap between successive prints irrespective of label size or speed)
Low Ribbon and End of Ribbon detection with predicted changeover time built in as standard

Label specification

Width/length: 1.6" to 6.5" / 2.0" to 11.8" (40 to 165mm / 50 to 300mm)
Capacity: Up to 400mm spool diameter (typically delivers over 9,000 typical GS1 bar code labels per roll)
Low Labels and End of Label Reel detection, with predicted changeover time built in as standard
Automatic adjustment for label/backing type and label size
1GB on-board label database, sufficient for 62,000 typical GS1 bar code label designs

Print capabilities

Full downloadable font support using TrueType® fonts (including multiple languages and Unicode support); fixed, variable and merged text fields; flexible date/time formats; flexible shift code formats; auto best before date calculations and concession management; calendar rules; auto incrementing/decrementing counters; multiple graphic formats supported (up to maximum print area); database linked fields; scalable text and text blocks

Bar codes supported

EAN 8, EAN 13, UPC-A, UPC-E, Code 39, GS1-128, Code 128, ITF, RSS (including 2D composite codes); others available upon request

Connectivity

Ethernet, Power-over-Ethernet, RS232, Configurable I/O (24V, PNP and volt free)
USB (for backup/restore and label upload), remote Control Videojet 9560 via a web browser

Communications protocols

Compatible with Videojet CLARISUITE™
Videojet binary and simple-ASCII protocols
Compatible with any label design software which supports Zebra or Sato print engines
Zebra (ZPL), Sato (SBPL) and Markem-Imaje (Cimcomms, DCP) protocol support
EtherNet/IP™
PROFINET®

Interface

CLARITY™ Controller with interactive on-board video tutorials

Language capabilities

Arabic, Bulgarian, Czech, Danish, English, German, Greek, Finnish, French, Hebrew, Hungarian, Italian, Japanese, Korean, Dutch, Norwegian, Polish, Portuguese, Romanian, Russian, Serbian, simplified Chinese, Slovak, Spanish, Swedish, Thai, Traditional Chinese, Turkish, Vietnamese

Air consumption

No air required for standard Direct Apply labelling

Power consumption

90 – 260VAC (115W at 50 packs per minute)

Operating environment

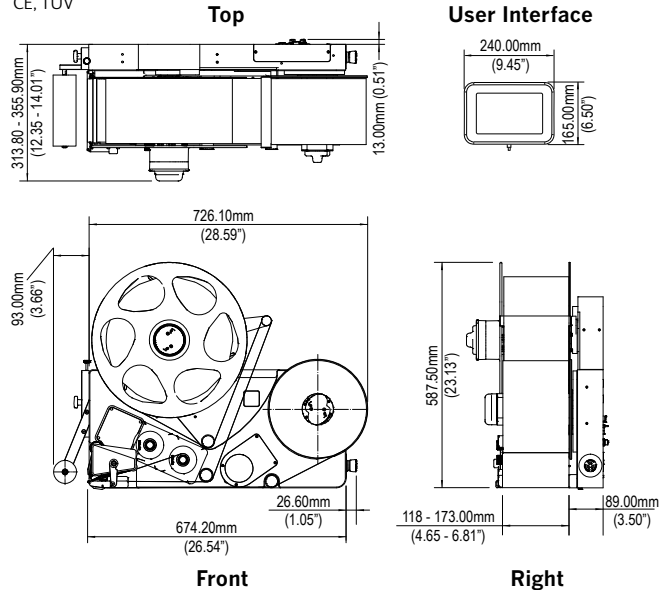
Temperature Range: 5-40°C (41-104°F)
Humidity: 20 - 85% Relative, non-condensing

Weight

88.2lbs (40kg) (max, excluding ribbon and labels)

Applicable certifications

CE, TUV



Call us free on **0800 500 3023**

Email uksales@videojet.com

or visit www.videojet.co.uk

Videojet Technologies Ltd.

4 & 5 Ermine Centre, Huntingdon, Cambridgeshire PE29 6XX / UK

Call us free on **+353 1 450 2833**

Email irelandsales@videojet.com

or visit www.videojet.ie

Videojet Ireland

C2, South City Business Park, Tallaght, Dublin 24 / Ireland

© 2024 Videojet Technologies Inc. — All rights reserved.

Videojet Technologies Inc.'s policy is one of continued product improvement. We reserve the right to alter design and/or specifications without notice.

Part No. SL000730
br-9560-en-0624

